

Using Nexus DSC & ServoCAT with SkyTools

This document describes how to setup your Nexus DSC with a Windows based computer running SkyTools 3.

Requirements

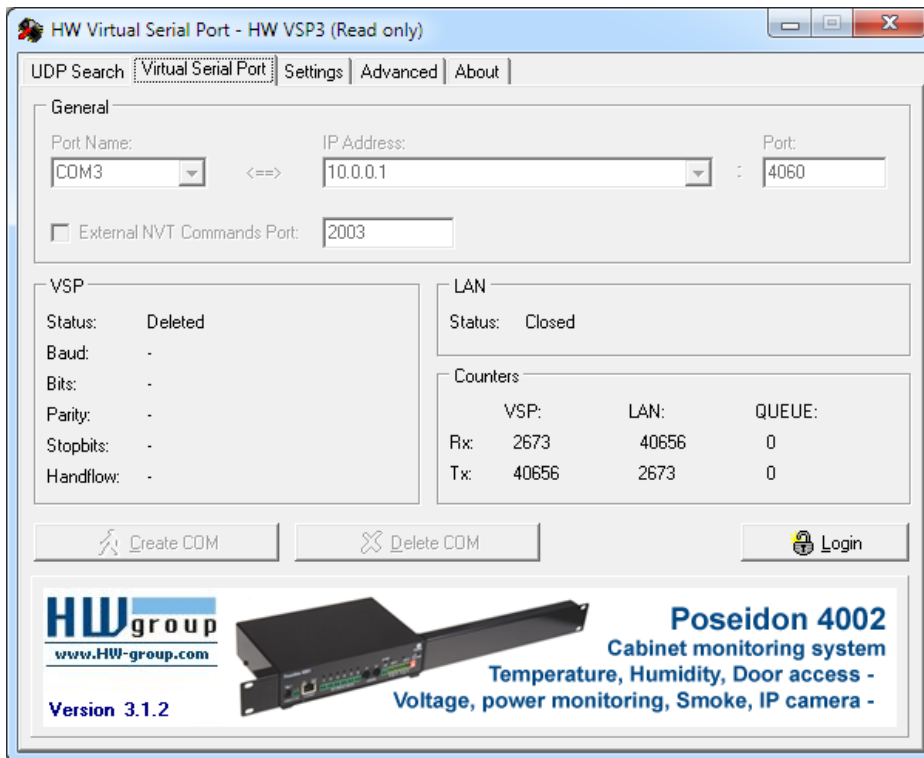
- Windows based PC/laptop/tablet
- Installed ASCOM Platform (from <http://ascom-standards.org>)
- Installed ASCOM driver for ServoCAT (from <http://www.unm.edu/~eschman/>)

Virtual Serial Port Setup

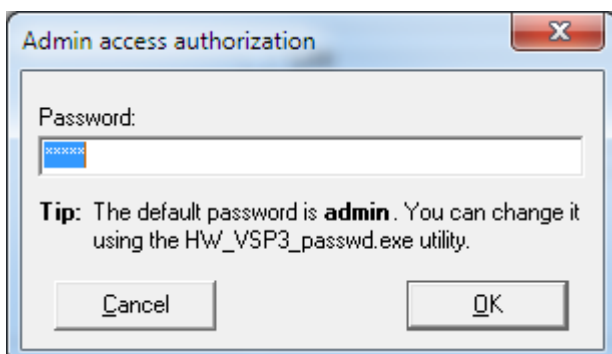
In order to use Nexus DSC with planetarium software it is necessary to setup a Virtual Serial Port to TCP/IP redirection utility. HW VSP3 is used in this guide. It is free for personal use and can be downloaded from:

http://www.hw-group.com/products/hw_vsp/index_en.html

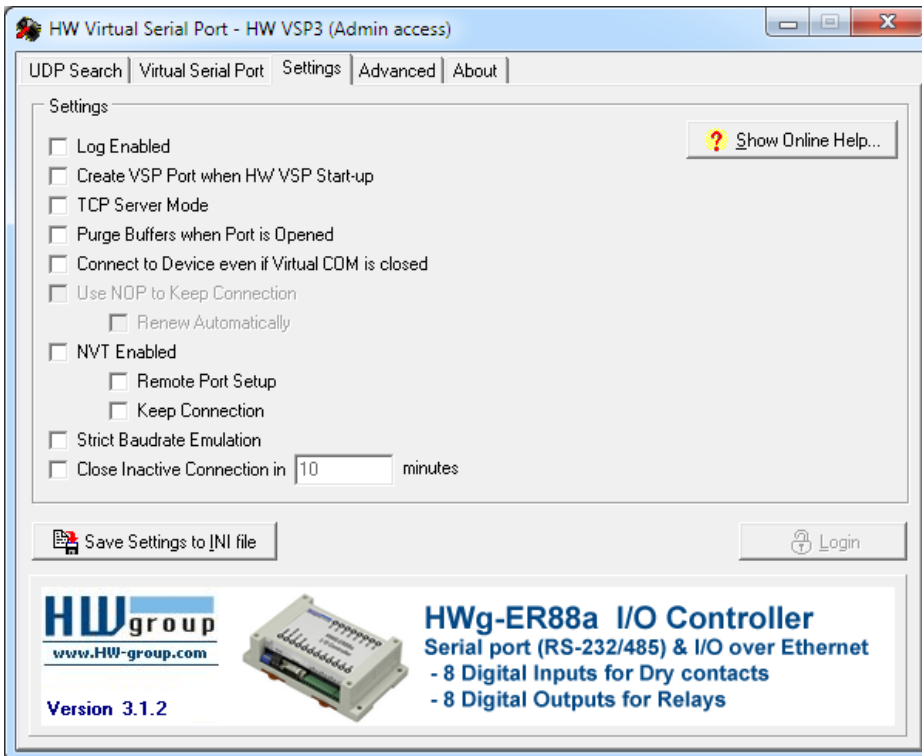
1. Install and run the utility:



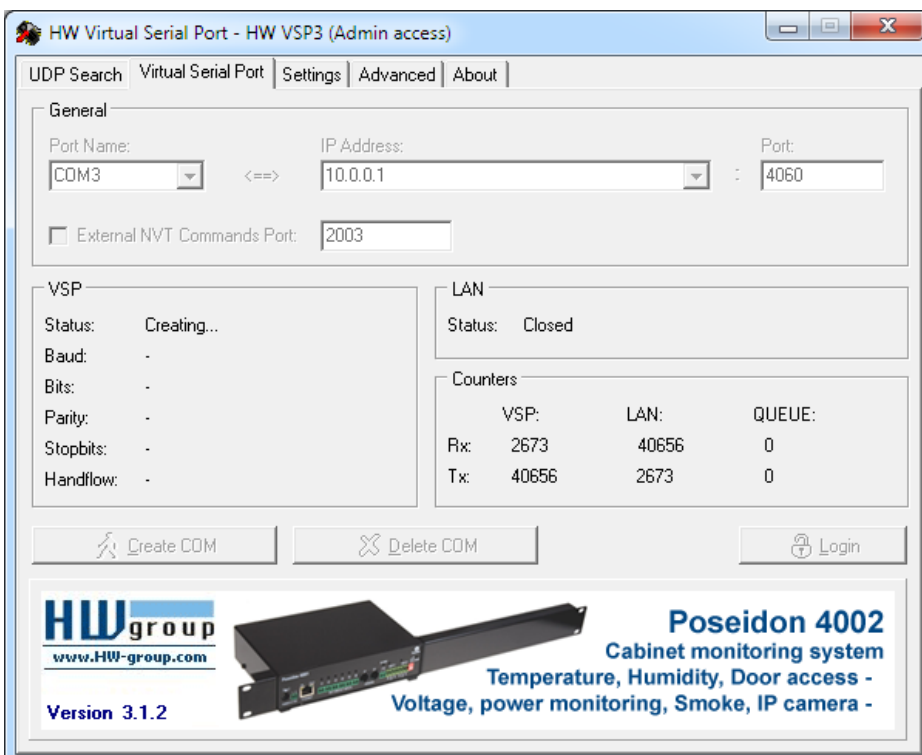
2. Click on the 'Login' button and then click on the OK button:



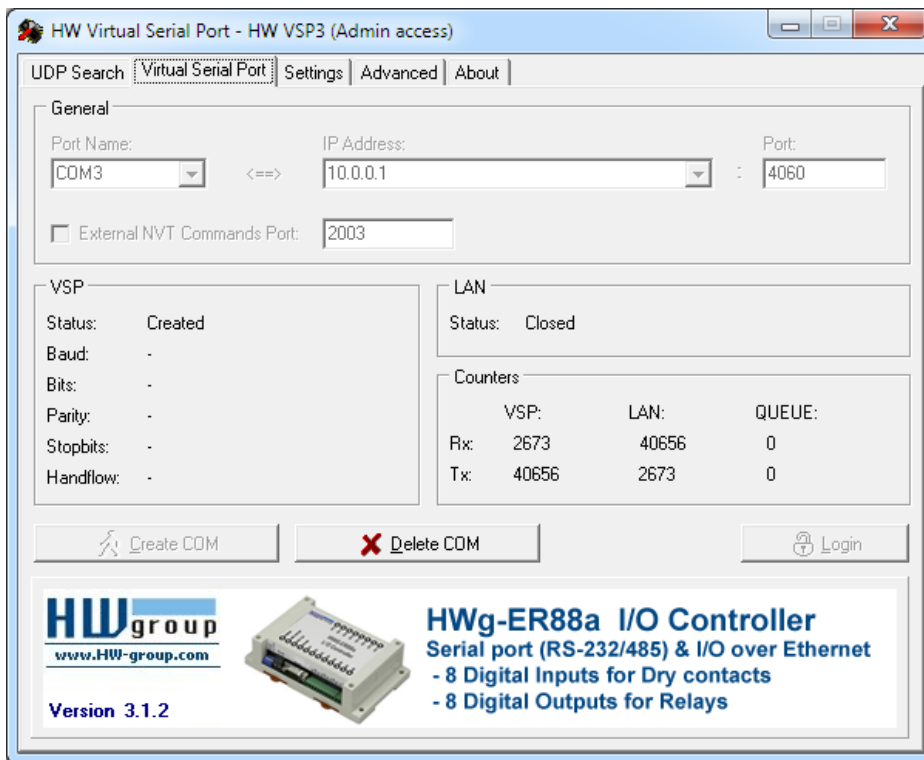
3. Click on 'Settings' tab and uncheck all of the boxes:



4. Click on 'Virtual Serial Port' tab. Select a 'Port Name' (use COM3-COM8 for software that cannot access other ports), set IP address to 10.0.0.1 and 'Port' to 4060. Then click 'Create COM':



5. HW VSP utility will create a virtual COM port:



Please make sure that 'Status' says 'Created'. In case of an error just click 'Delete COM' then select another 'Port Name' and try again.

Please take a note of the name of the 'Port Name' as it is necessary to use that name later on.

The steps 1-5 need to be done only once. On subsequent runs you will only need to start the HW VSP utility.

Setting Nexus DSC up for ServoCAT

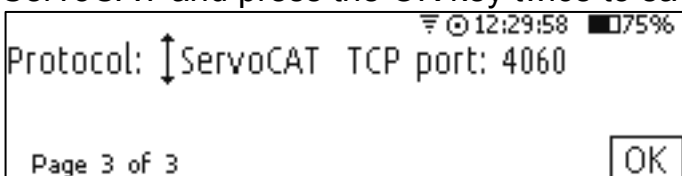
Please turn Nexus DSC ON. The following steps need to be taken only once.

1. WiFi settings.

Go to Settings->WiFi:



Press the OK key until you get to page 3 of the WiFi settings, change Protocol to ServoCAT and press the OK key twice to save the new setting:



2. Serial port settings.

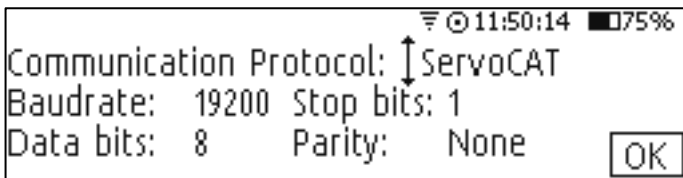
Go to Settings->Communications:



Select Serial and press the OK key:



Make sure that the settings are as follows:



3. USB port settings.

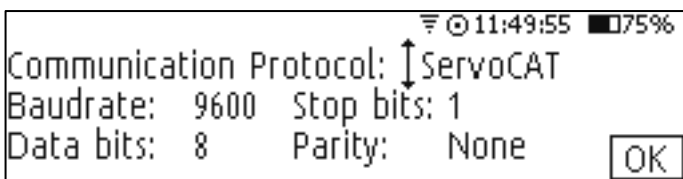
Go to Settings->Communications:



Select USB and press the OK key:



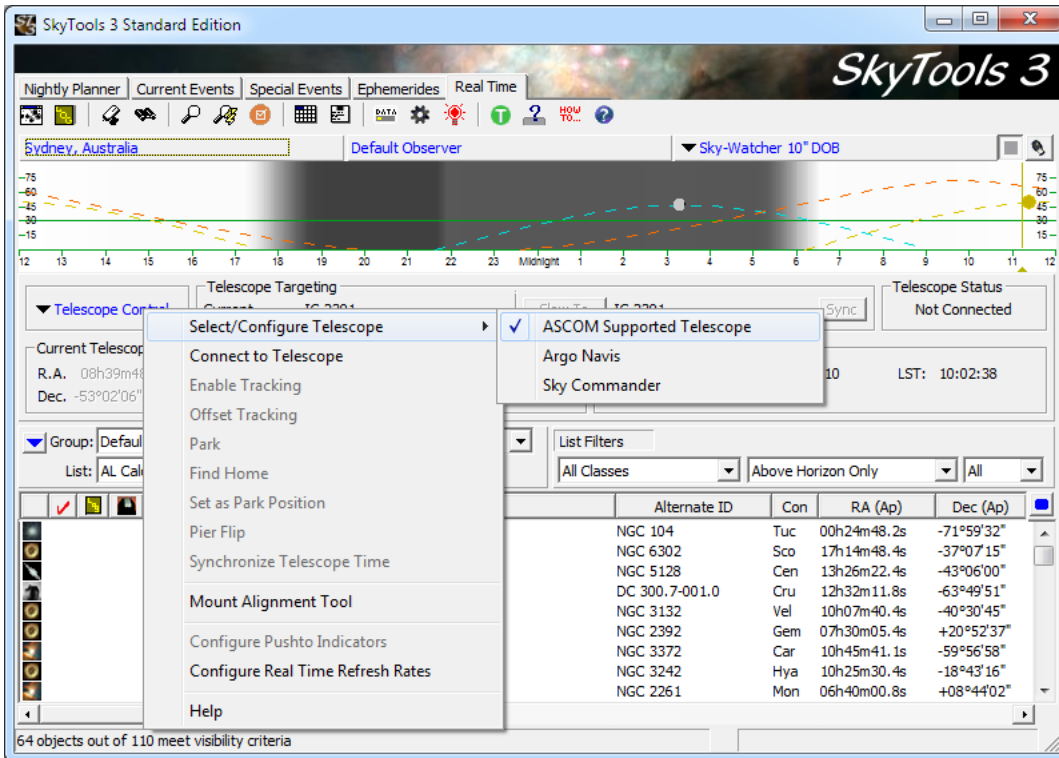
Make sure that the settings are as follows:



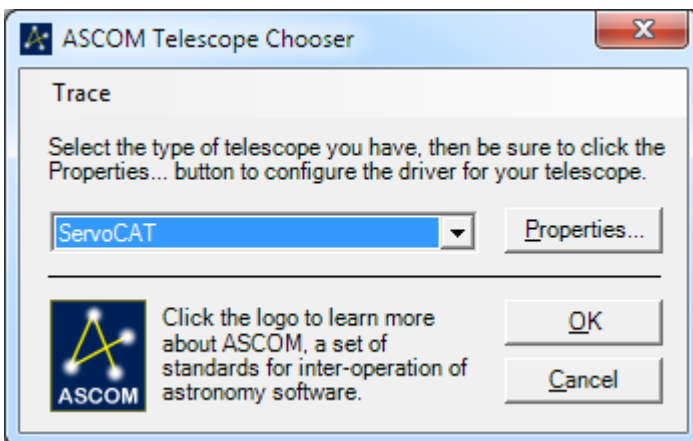
Setting SkyTools up

SkyTools needs to be setup to use ASCOM driver for ServoCAT. The following steps need to be taken only once.

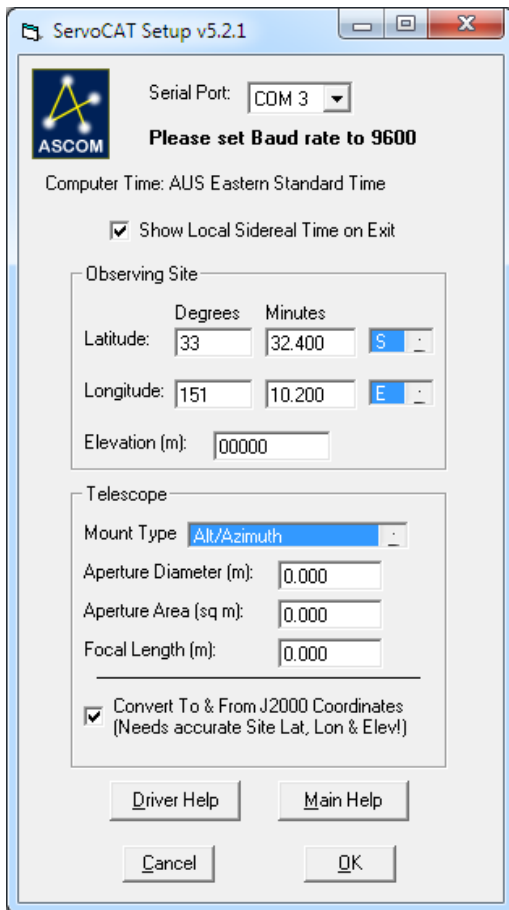
1. Start SkyTools, click on *Telescope Control->Select/Configure Telescope->ASCOM Supported Telescope*:



2. SkyTools will display the following window. Select ServoCAT:



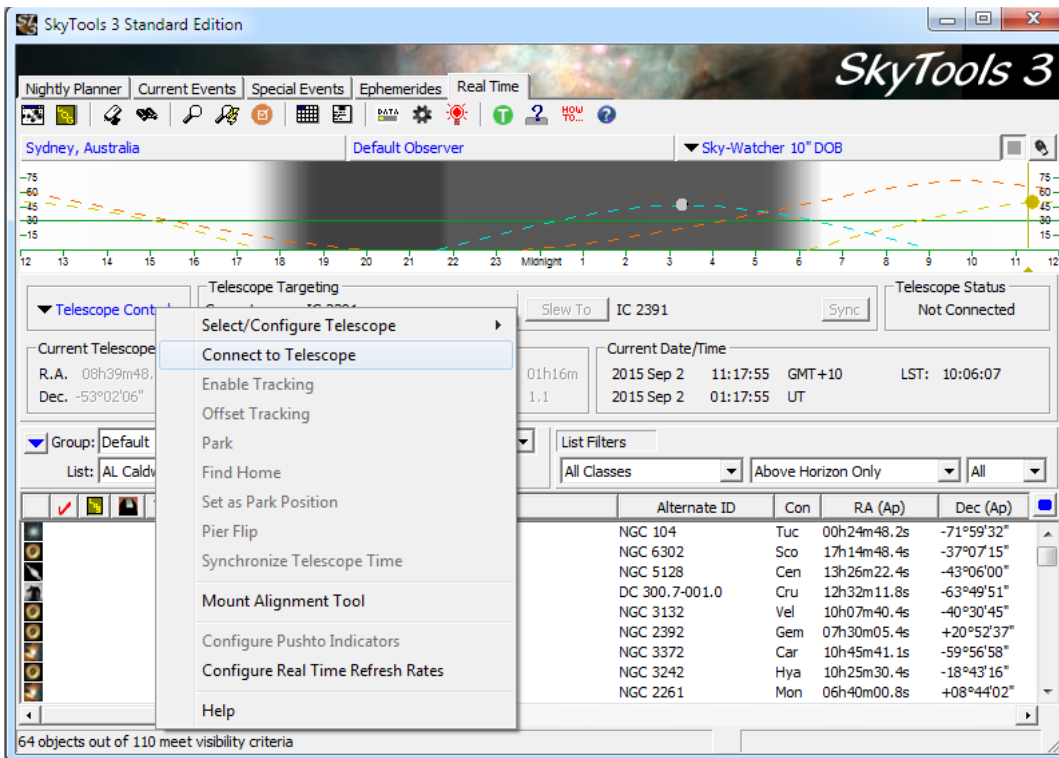
3. Click on *Properties*, set *Serial Port* to the COM port number you set HW VSP to and adjust other settings accordingly:



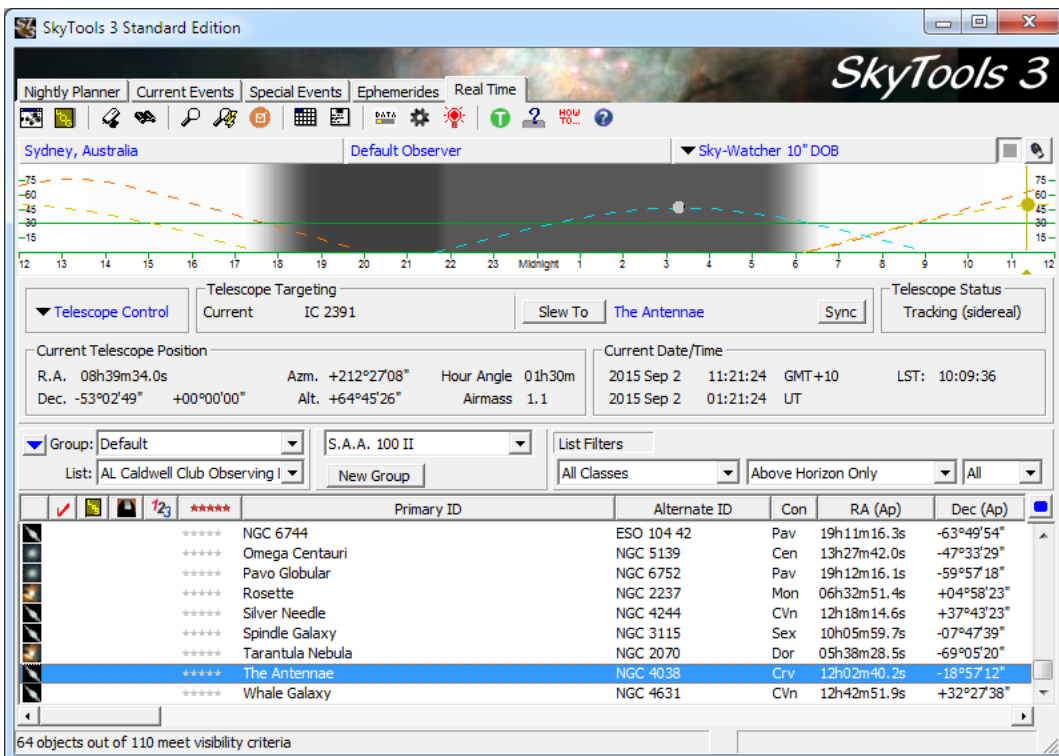
Click on the OK buttons in the above two windows. Now SkyTools' main window will be displayed again.

Using SkyTools with Nexus DSC & ServoCAT

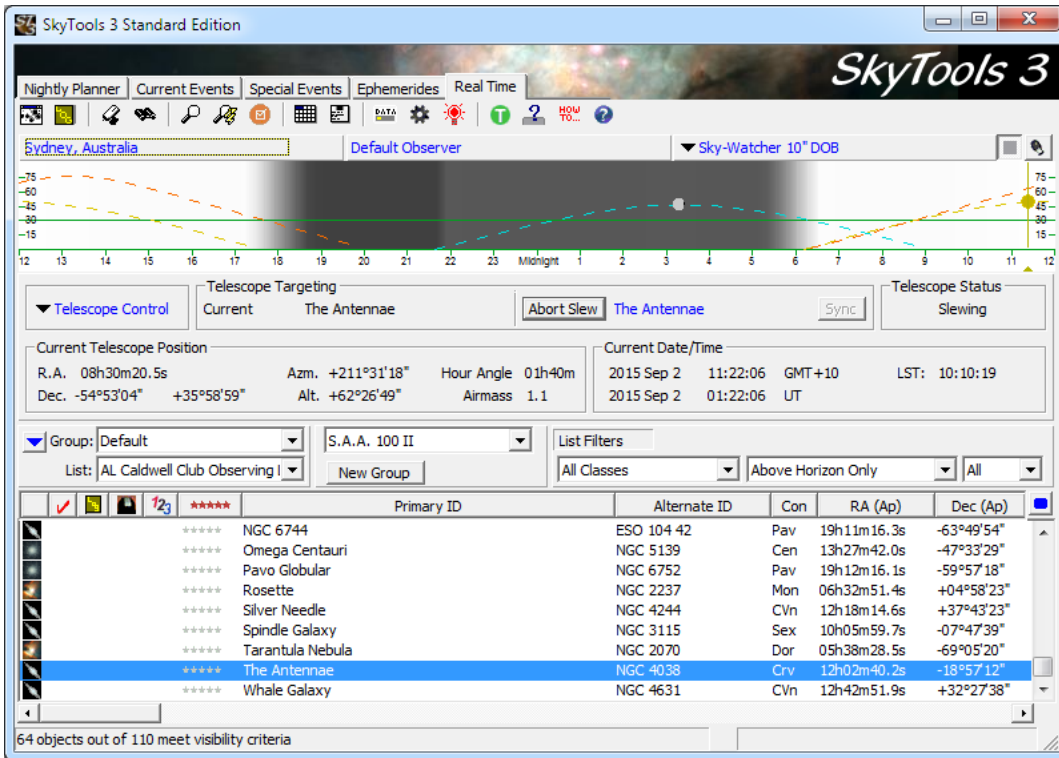
Join Nexus DSC's network on your PC/laptop/tablet. Go to *Telescope Control*->*Connect to Telescope*:



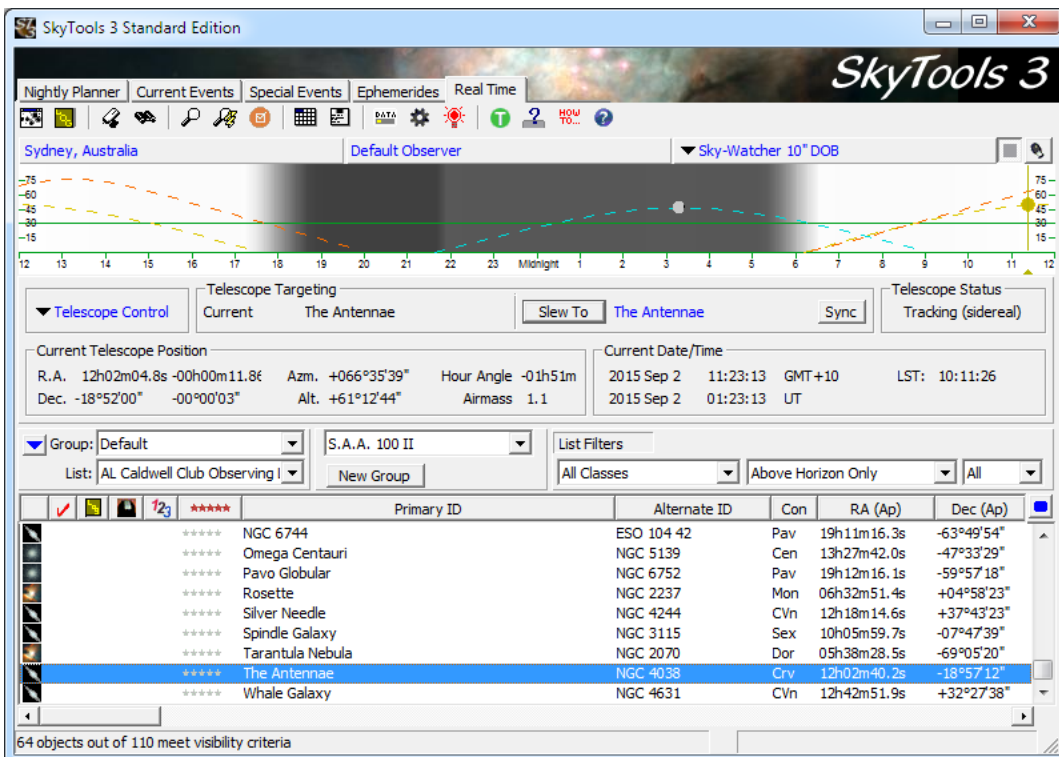
SkyTools will connect to Nexus DSC and start showing the current telescope position. The *Telescope Status* box will show *Tracking*.



Now you can select an object and click on the *Slew To* button. The *Telescope Status* box will show *Slewing*.



The *Telescope Status* box will show *Tracking* again once the telescope is pointing at the selected object:



DONE